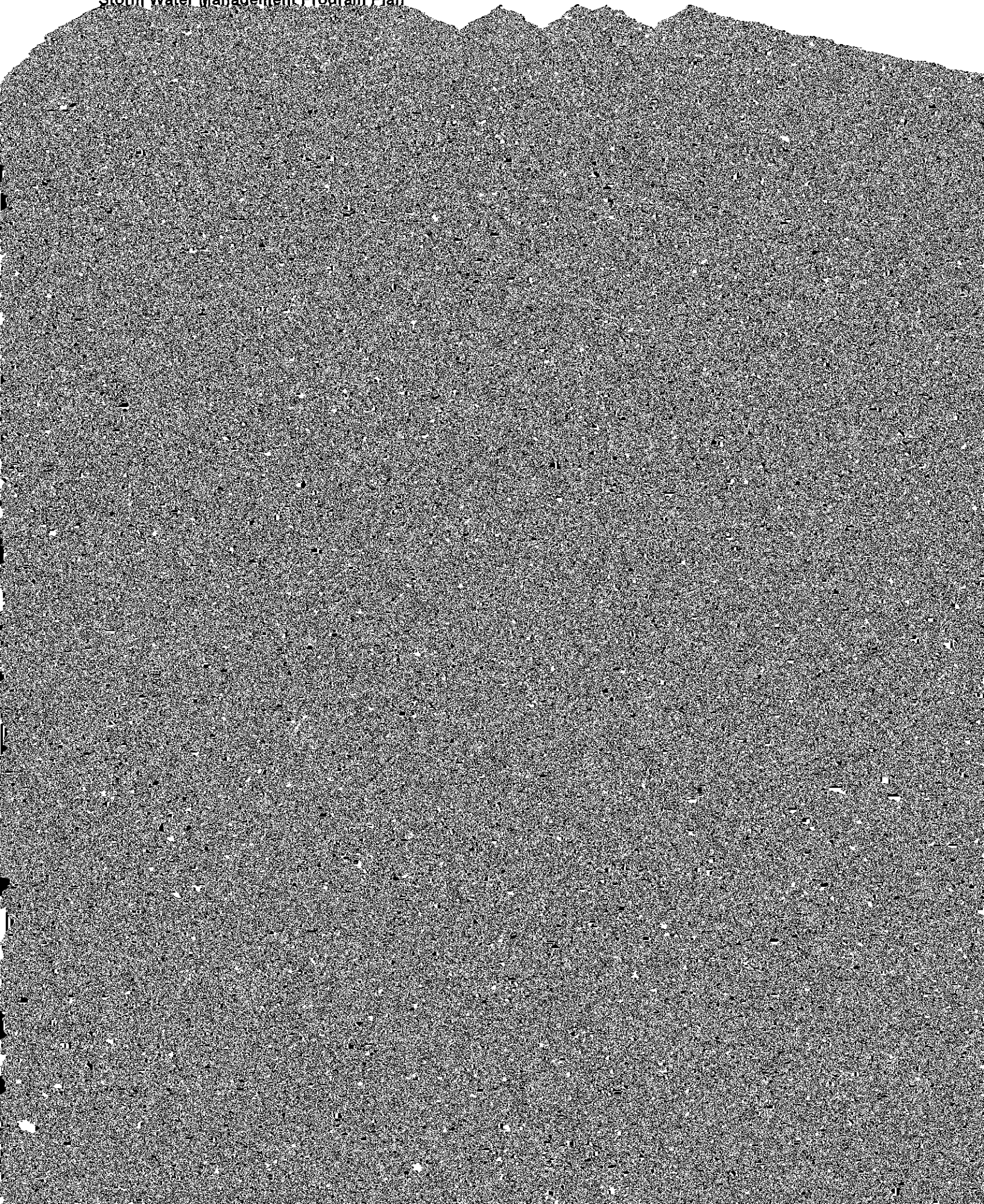
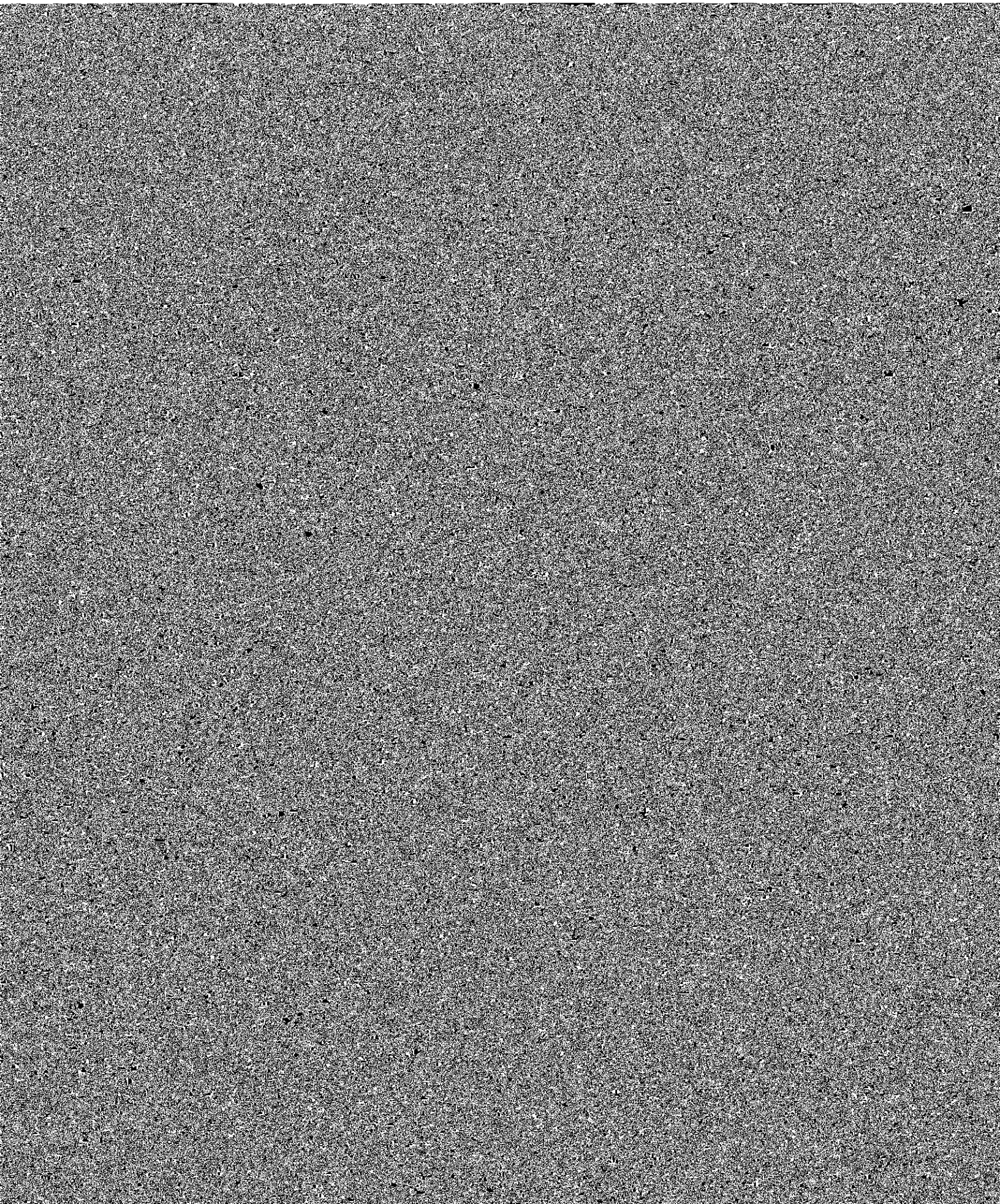




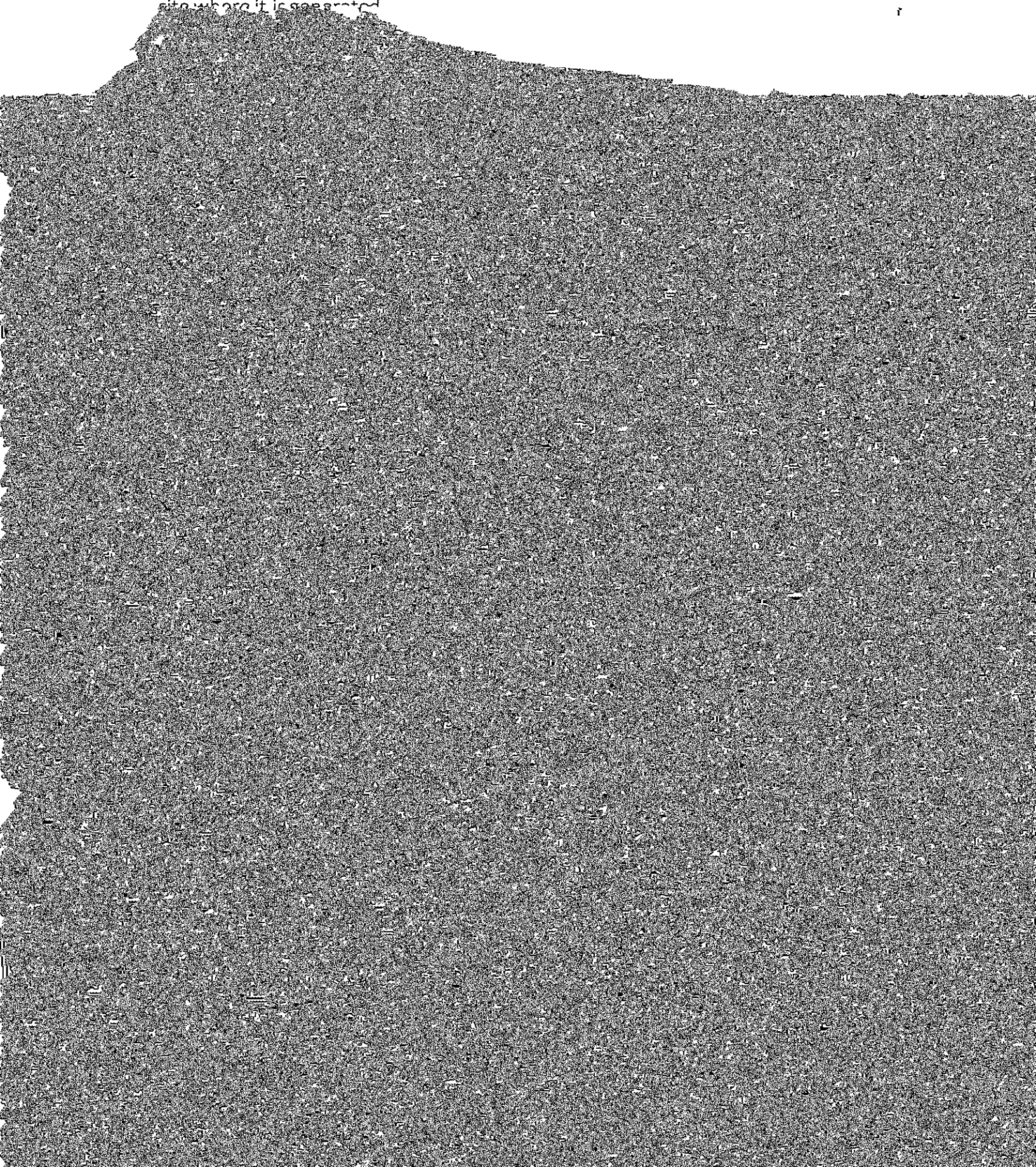
TABLE OF CONTENTS

1.0 INTRODUCTION 3



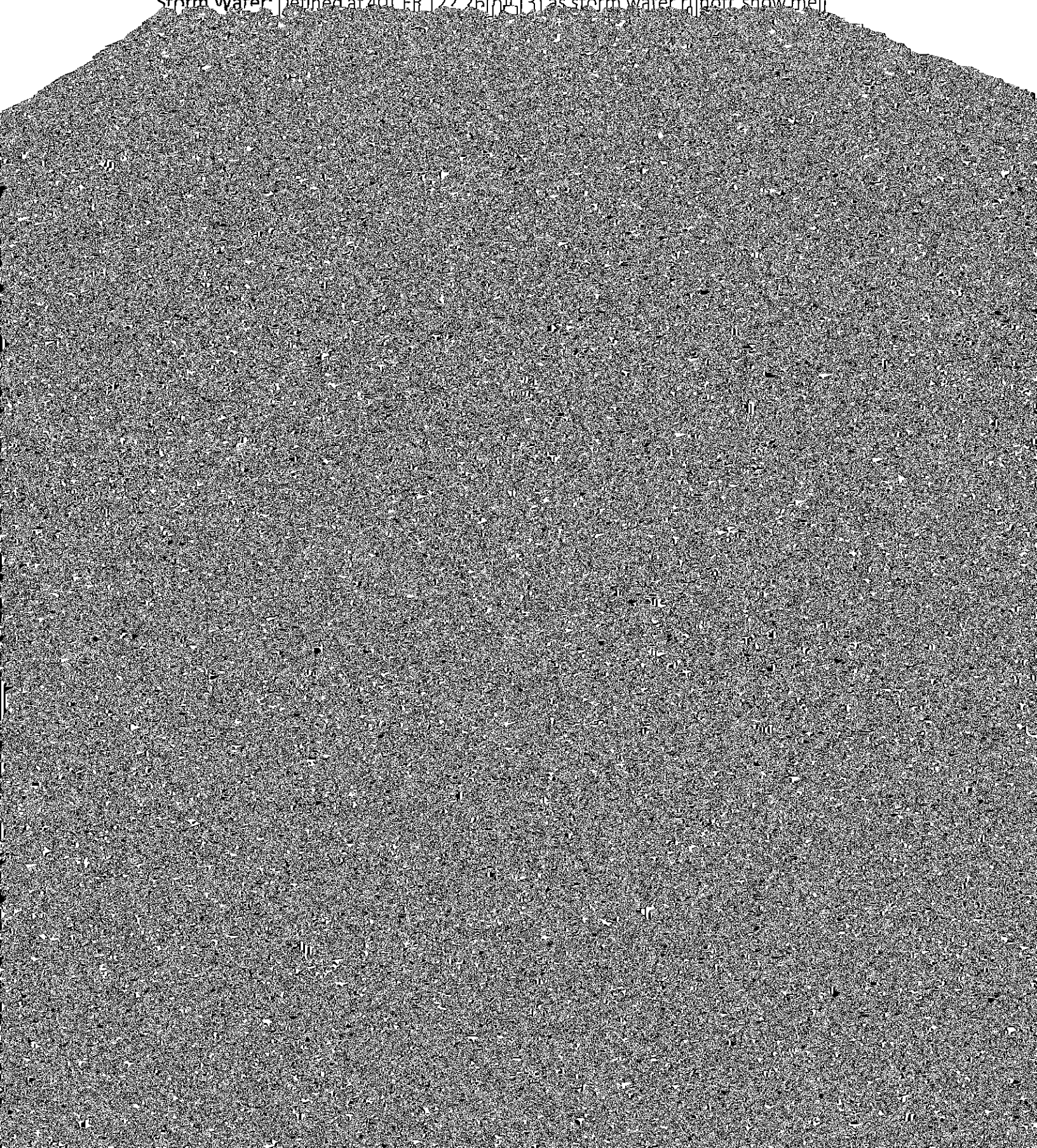


processes to infiltrate, evapotranspiration (the return of water to the atmosphere either through evaporation or by plants), or reuse storm water or runoff on the site where it is generated



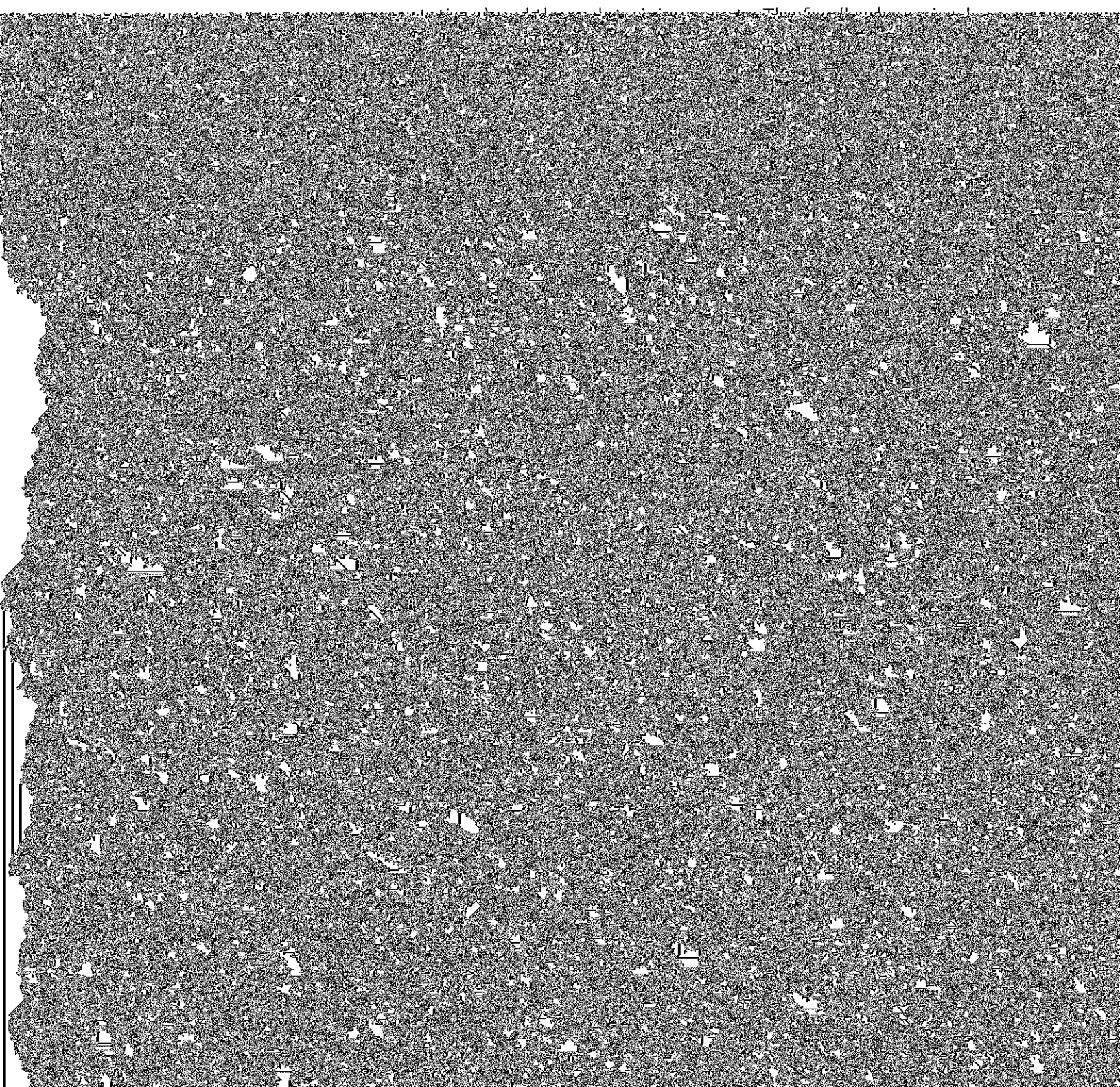
Permittee: University of North Alabama.

Storm Water: Defined at 40CFR 122.26(h)(13) as storm water runoff, snow melt



and the steps that they can take to reduce pollutants in storm water runoff. At least 2 BMPs will be related to Public Involvement and at least 2 BMPs will be related to Public Education.

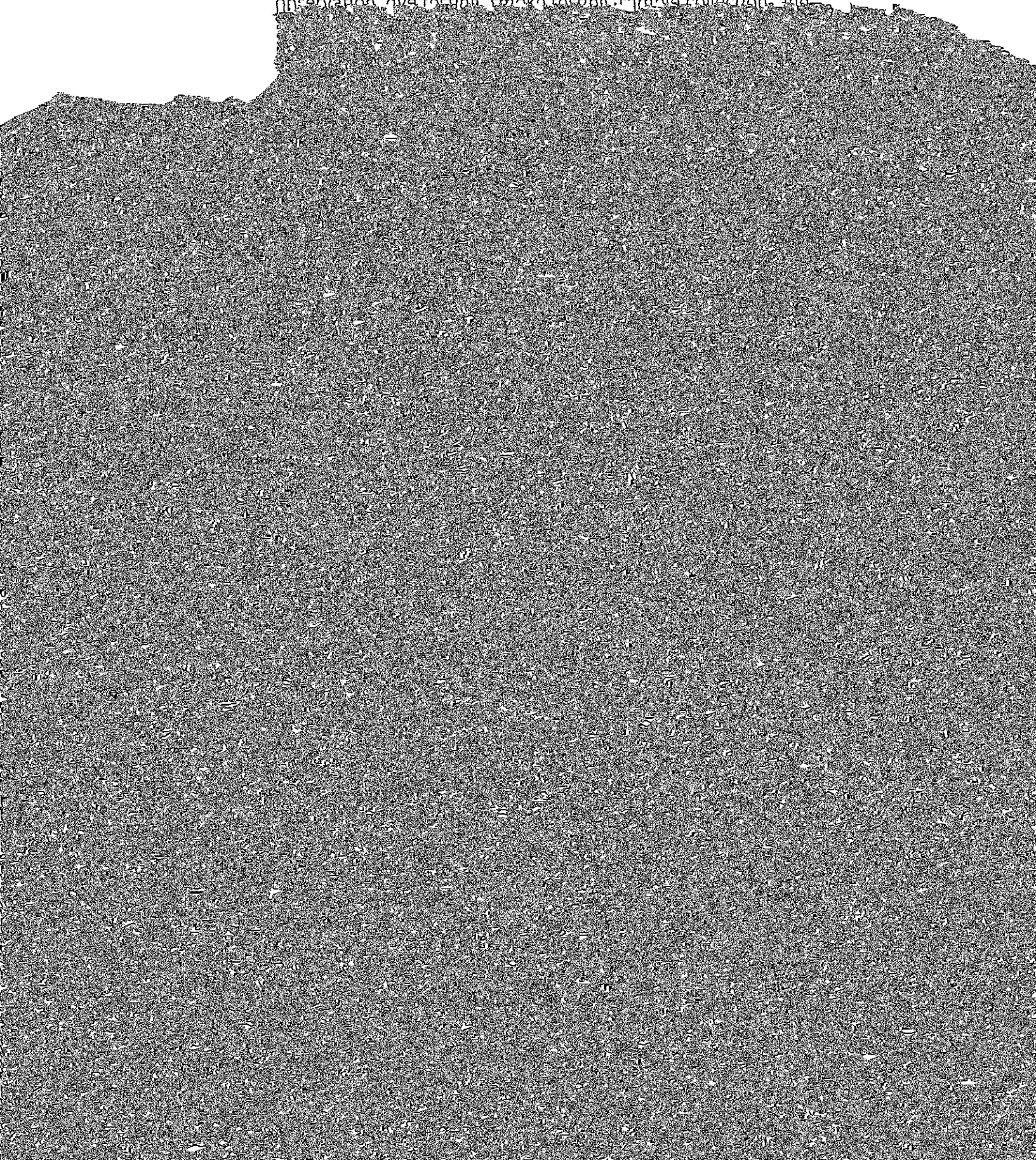
- A. Public Input - The University will seek and consider public input each year regarding the development, revision and implementation of the SWMPP. Options for seeking input include the use of University media (e.g., website, email,



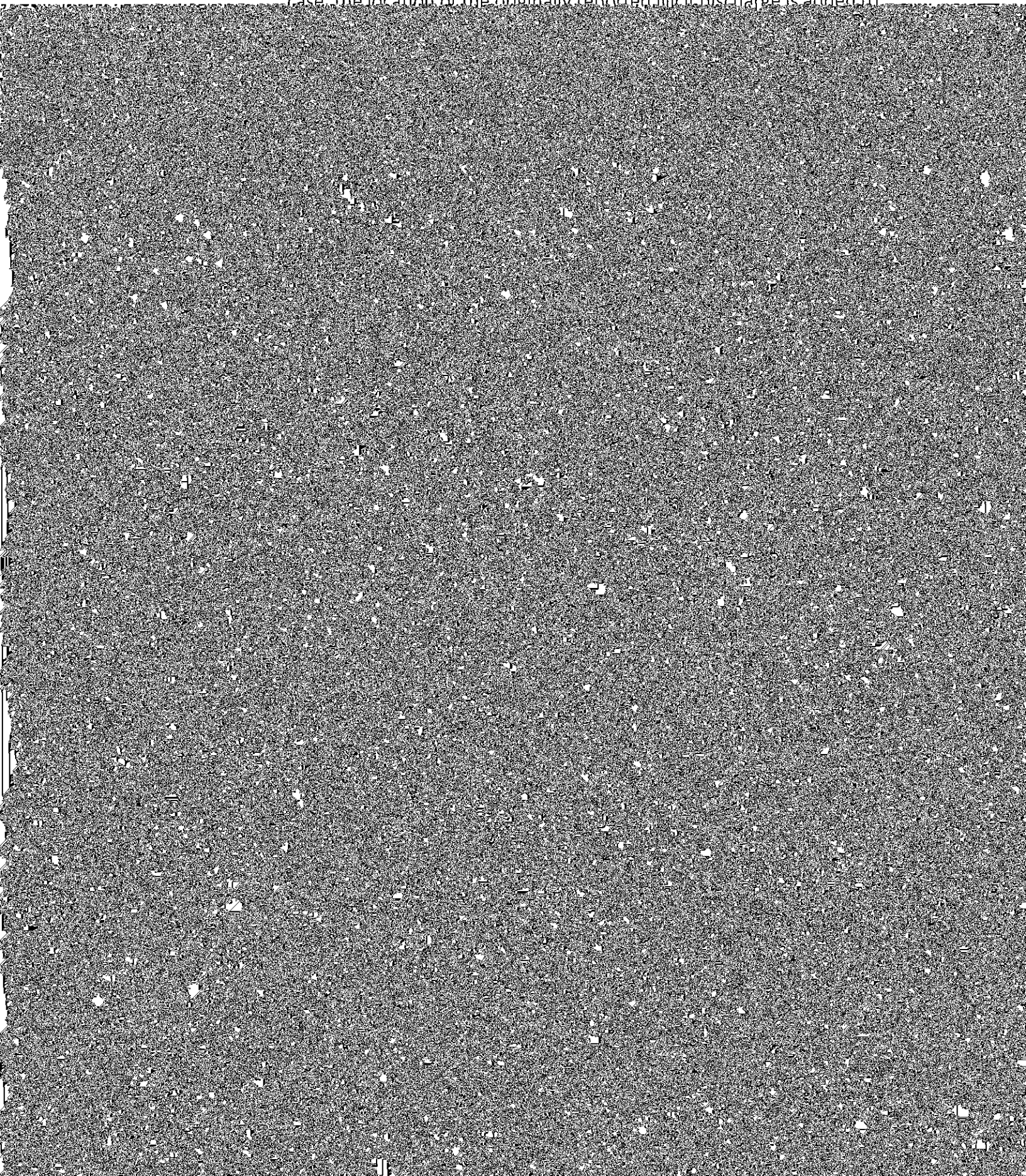
Measurable Goals, Public Education and Public Involvement on Storm Water Impacts

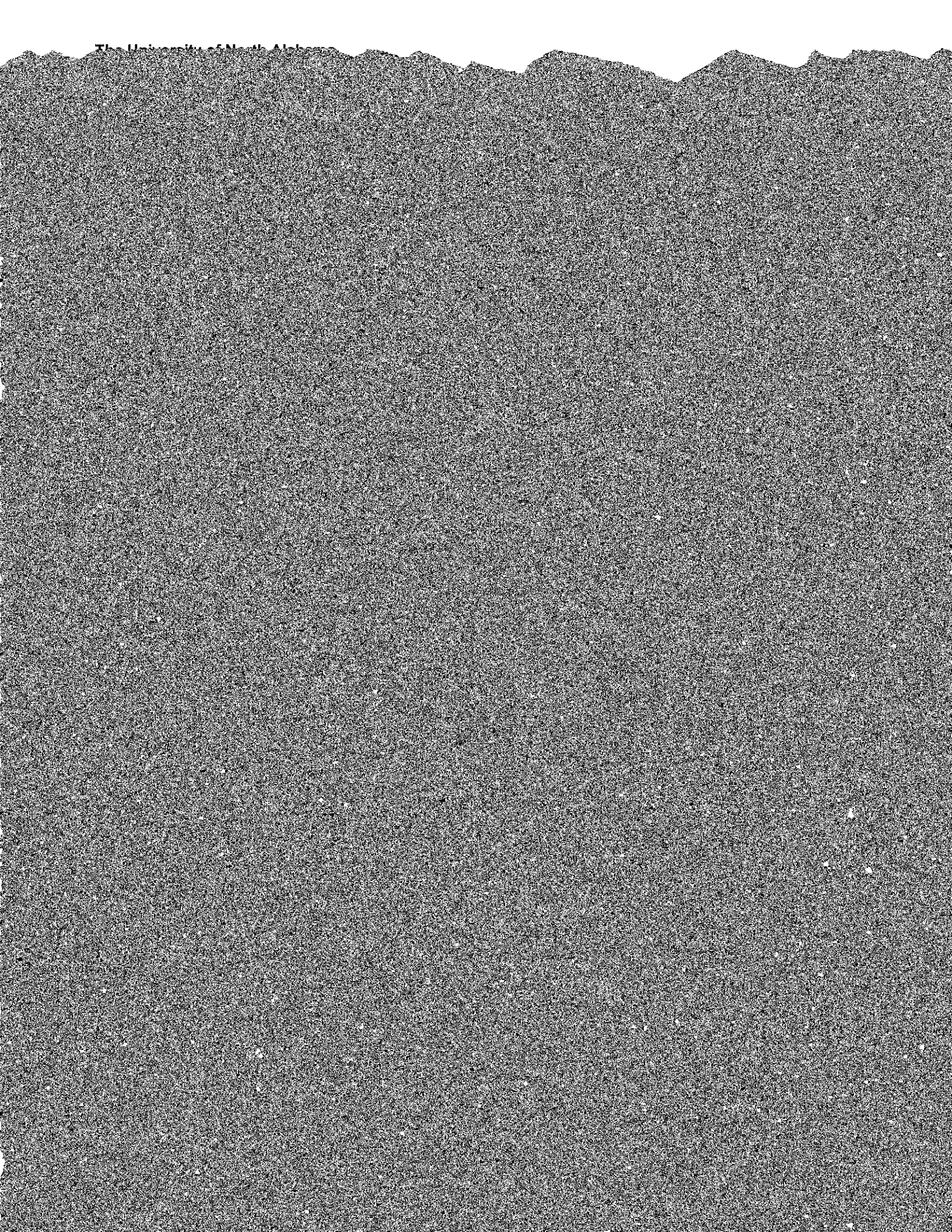
1. Public Education Presentations – Quantify the number of individuals reached

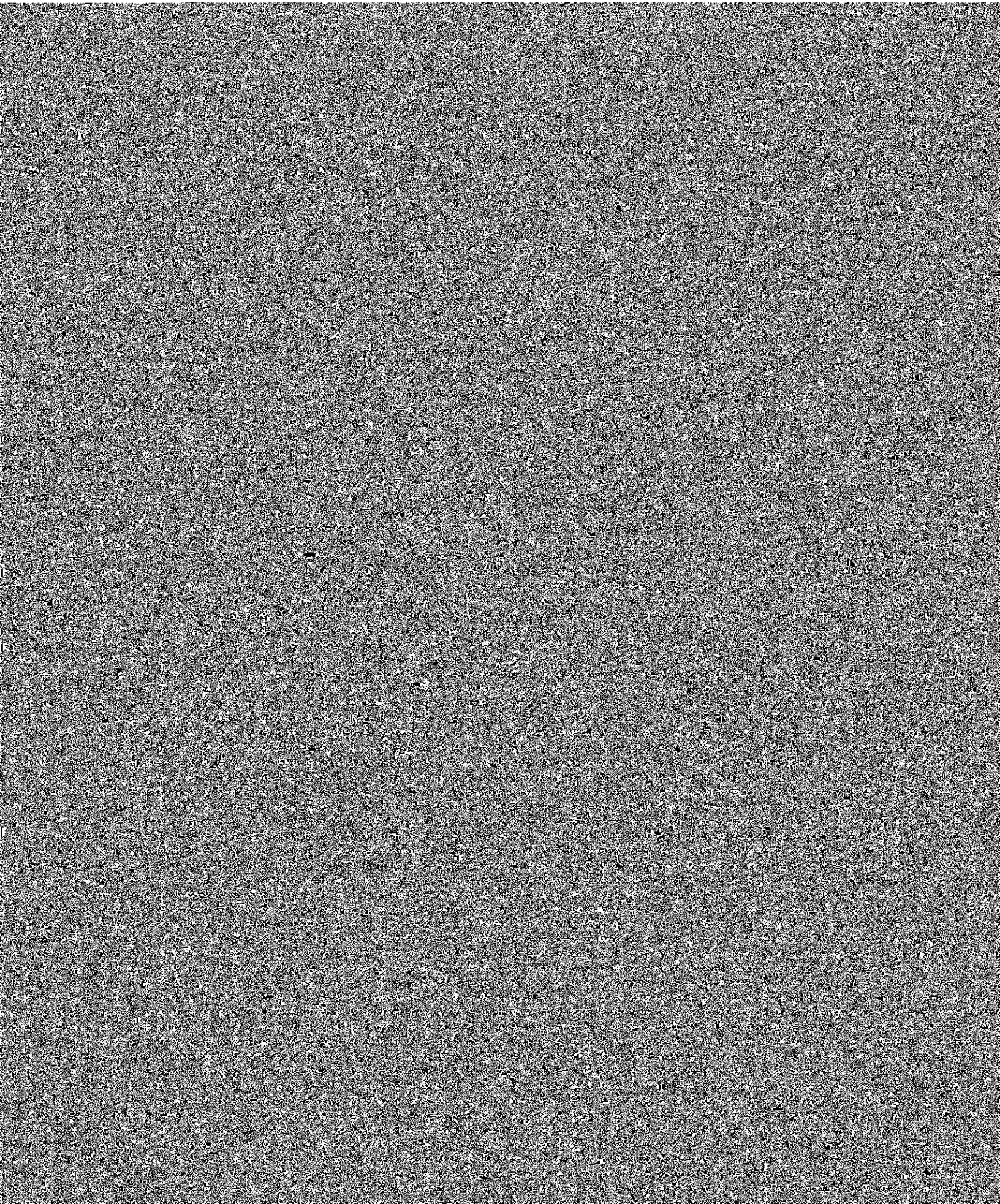
information collected during the initial discovery period, observation, and the resources/technology available. Tracing techniques include visual observation, dye testing, smoke testing, sample collection, and



case, the location of the originally reported illicit discharge is added to

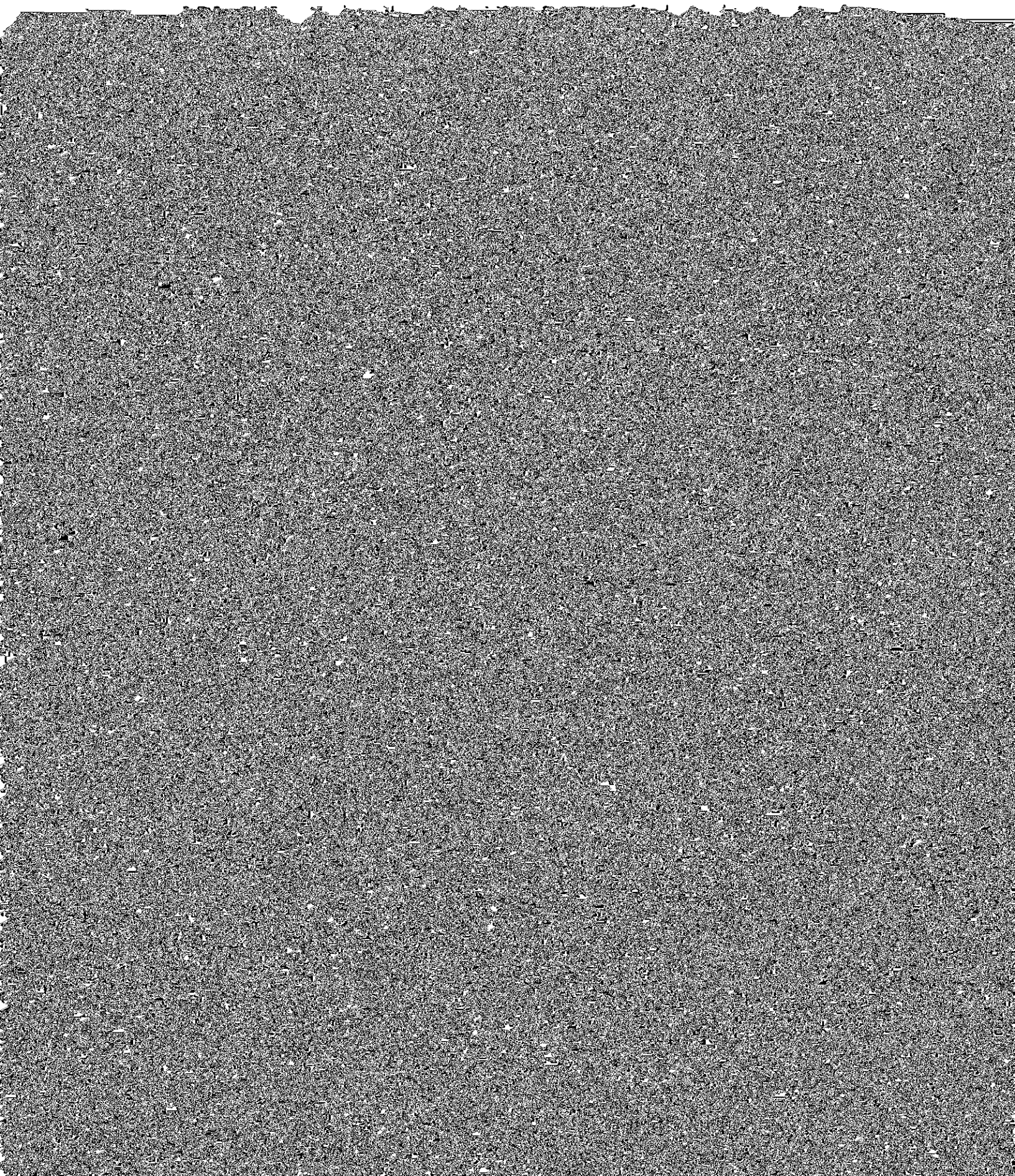






2.4 Post-Construction Storm Water Management in New Development and Redevelopment

The post-construction runoff control measure is designed to ensure that new construction designs do not result in increased storm water pollution. Post-construction storm water management is necessary because runoff has been shown to significantly affect receiving waterbodies. This is due to an increase in impervious areas (i.e., roofs, driveways, parking lots) and changes in



**The University of North Alabama
Storm Water Management Program Plan**

- Fuel and Oil Handling and Receiving
- Maintenance of Buildings, Facilities and Fixed Structures
- Vehicle Fueling
- Outdoor Material Storage
- Management of Pesticides, Herbicides
- Equipment Maintenance
- Landscaping and Ground Maintenance
- Vehicle Maintenance
- Vehicle Washing
- Street Sweeping

3.0 SPECIAL CONDITIONS

3.1 SWMPP Review and Updating

The University of North Alabama will review the SWMPP annually. The SWMPP

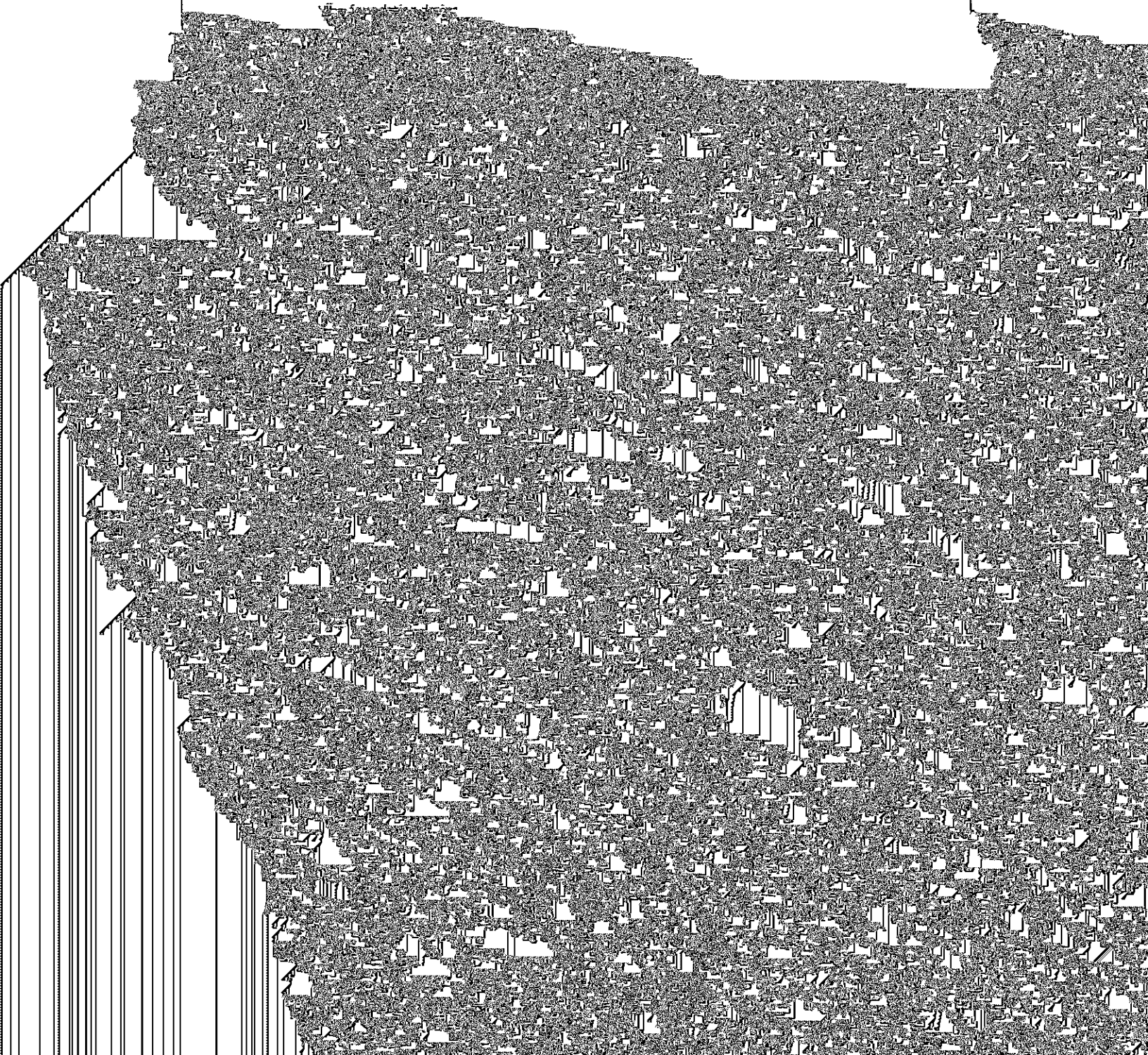




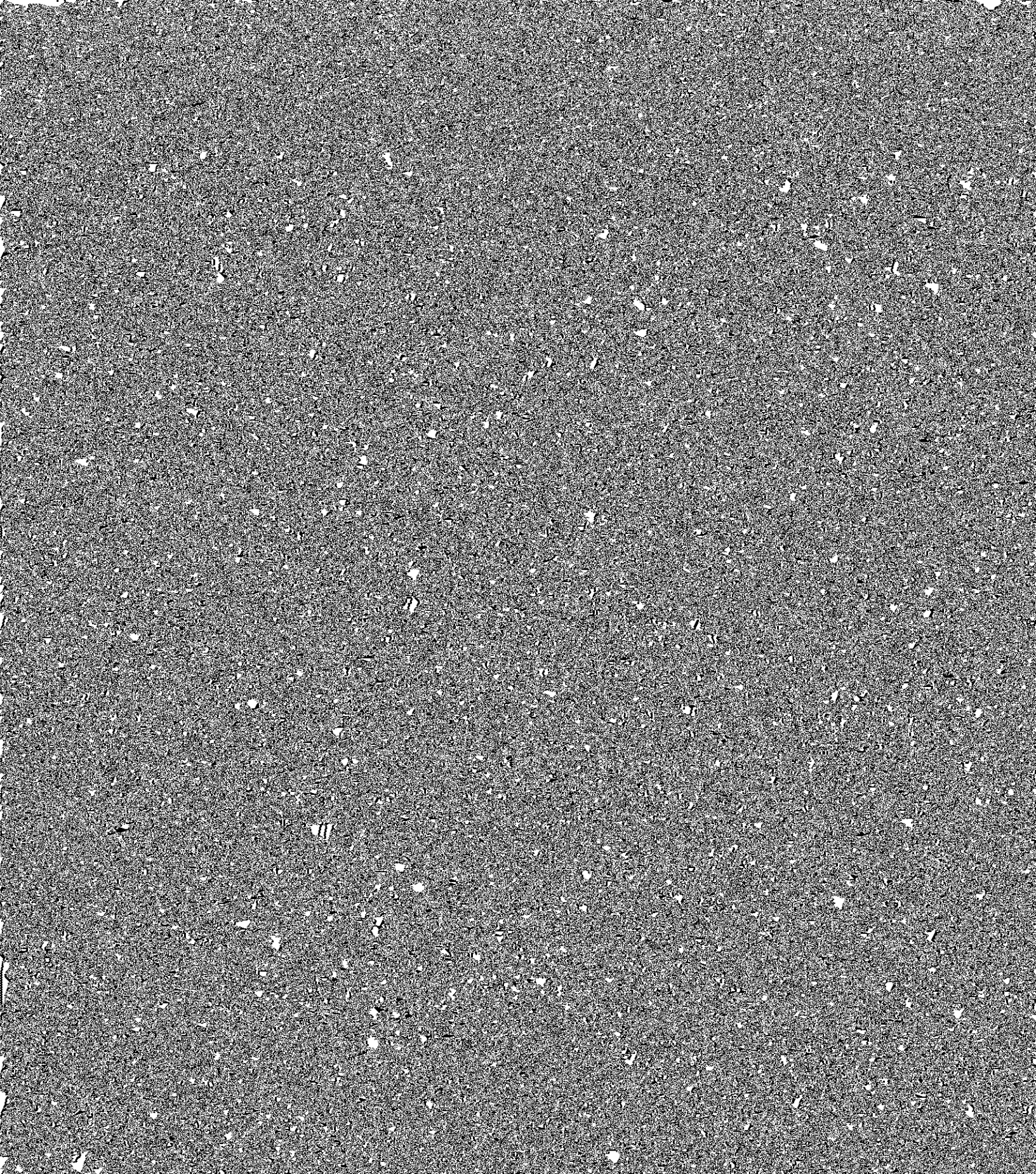
Attachment 1 – Policy on Storm Water Management Compliance – Illicit Discharge Detection and Elimination Program, cont.

POLICY ON STORMWATER MANAGEMENT COMPLIANCE – Illicit Discharge Detection and Elimination

- iv. uncontaminated ground water infiltration
- v. uncontaminated pumped groundwater
- vi. discharges from potable water sources

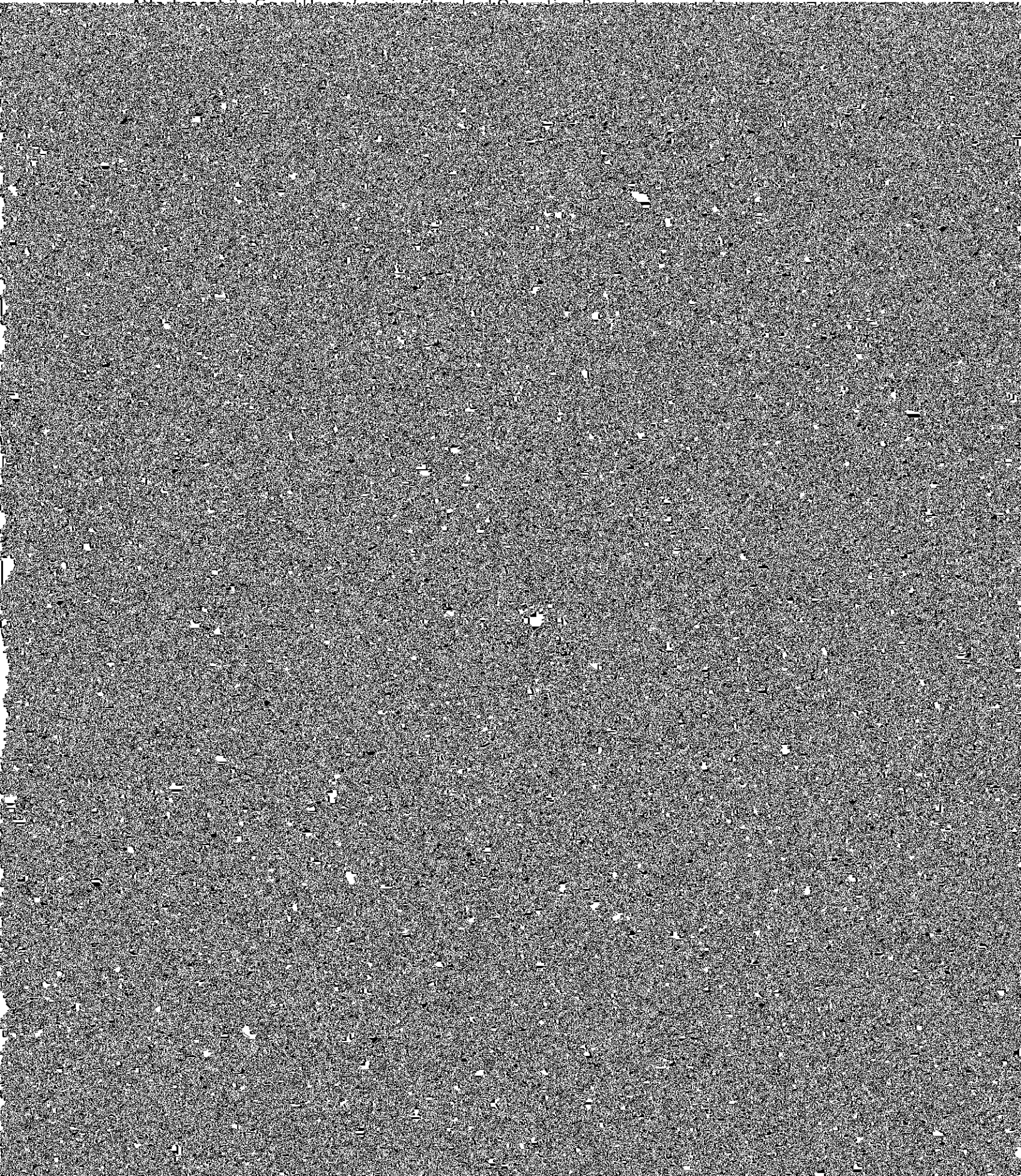


Attachment 1 – Policy on Storm Water Management Compliance – Illicit Discharge Detection and



The University of North Alabama
Storm Water Management Program Plan

Attachment 2: Construction Erosion Control Plan



The University of North Alabama
Storm Water Management Program Plan

Attachment 2 - Good Housekeeping Standard Operating Procedures, cont.

UNIVERSITY OF NORTH ALABAMA STORM WATER MANAGEMENT PROGRAM



