

UNIVERSITY OF NORTH ALABAMA
MUNICIPAL SEPARATE STORM SEWER (MS4)
STORM WATER MANAGEMENT PROGRAM
ANNUAL REPORT

April 1, 2022 – March 31, 2023

NPDES Permit No. ALR040063

- i. Not applicable.
- f. Results of monitoring data evaluation.
 - i. Not applicable.
- 3. Narrative report and assessment of all minimum control. Parts a. through e. describe the five minimum control measures, goals, progress, and an assessment of the progress. Section III identifies the controls planned for the next reporting cycle.

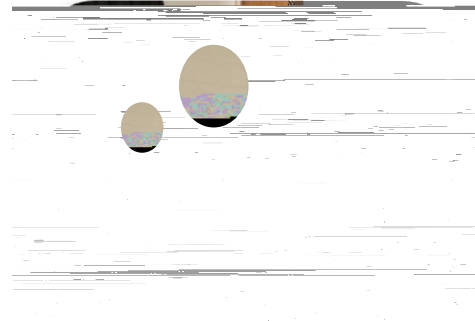
a. Public Education and Public Involvement of Storm Water Impacts

1. Input from the Public

An announcement was sent through UNA's twice weekly newsletter, *The Digest*, informing the campus community that their input was welcome in the development, revision, and implementation of the SWMPP. No input was received.

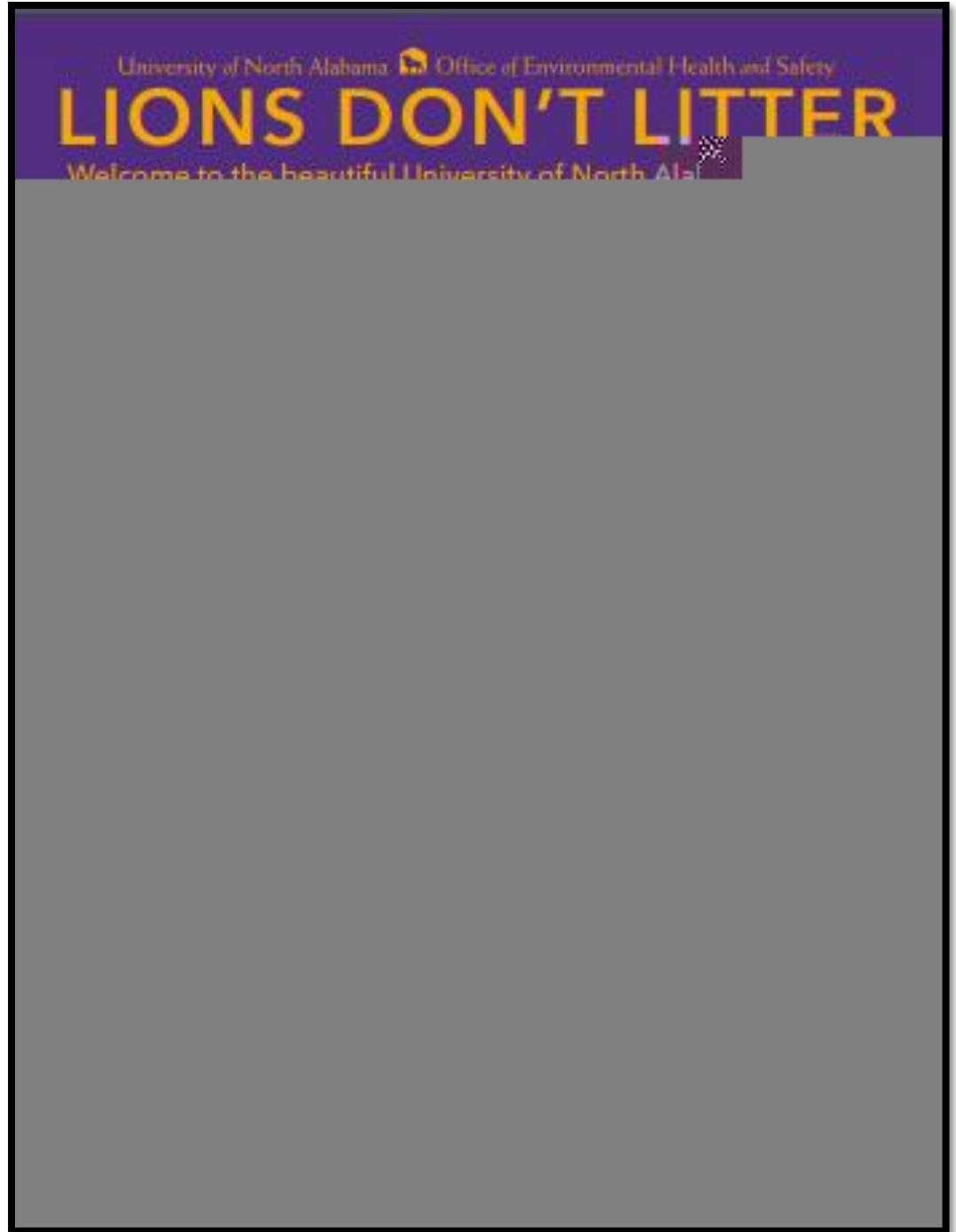
ii. Public Education

- Students from the Department of Teaching, Learning, and Leadership's ED292 course (Preprofessional Seminar and Laboratory Experience) partnered with the Environmental Health and Safety Department to deliver an educational event at the Kilby Laboratory School (Grades 4-6) on the topic of pollution prevention. Each Team of 3 UNA students created a learning session lasting approximately 15 minutes each. The Kilby students rotated through the various learning stations, indoors and outdoors, while participating in the activity or lesson prepared.



This event was well-received by the Kilby students and faculty and provided an opportunity for UNA students to demonstrate their teaching abilities. A total of 60 students were involved.


-Fifteen hundred (1,500) copies of the *Mane Book* were distributed to new-to-campus students. The *Mane Book* is the guide which outlines key information to about campus to UNA students. Page 111, next page, defines the importance of litter prevention and meaningful ways everyone can prevent litter. The target audience was UNA students new-to-campus, <https://www.una.edu/orientation/docs/mane-book-2022-web-version-final.pdf>.



No BMP revisions are planned for this measurable goal.

4. The targeted pollutant sources include litter, sediment, and oil.
5. Target populations include campus students and residents, employees, and the surrounding community.

- v. Public Involvement Activities to Address the Reduction Litter, Floatables, and Debris
UNA groups sponsored and participated in several public involvement activities which are listed below. Participants included members from a variety of campus student organizations and departments.

Event Title, Date	Achievements
UNA UServe Cleanup, Mitchell-West Center for Social Inclusion, April 19, 2022	 <p>19 UNA participants</p>
Cypress Creek Kayak Cleanup, 6-2-22	UNA and community participants
Tennessee River Litter Tournament, 9-17-22	113 UNA and community participants
City-Wide Clean Up Day, 3-18-23	84 UNA and community participants

- vi. A variety of brochures and posters are posted on campus bulletin boards on campus. These communication methods can be found at <https://una.edu/facilities/environmental-health-and-safety/index.html> in the Storm Water Pollution Prevention section in the Storm Water Management folder. A total of twenty-four education/awareness posters were distributed.

Evaluation of the Effectiveness of the Control: This minimum control measure is effective. The partnership with the Muscle Shoals National Heritage Association helped to improve campus and community involvement through an increase in the number of sponsored clean up events. Involving the College of Education's student teachers to lead pollution prevention training at Kilby Laboratory School was well-received. This Minimum Control Measure allowed for frequent and meaningful activity related to UNA's Storm Water Management Program Plan. No BMP revisions are planned for this measurable goal.

b. Illicit Discharge Detection and Elimination (IDDE) Program

- i. The map of campus outfalls is found in Attachment 1.
- ii. UNA conducted dry weather screening at all (4) outfalls, listed below, each with a discharge to Unnamed Tributary to Cypress Creek:

- Grounds/Environmental Services Building(1)
 - Parking Lot W, Cedar St. (1)
 - East Campus (2)
- Dry Weather Screening indicates that no pollutants were observed being discharged at the outfalls. The Dry Weather Screening Form is located in Attachment 2.
- iii. The IDDE regulatory mechanism was reviewed and no changes were necessary. It is located in the Illicit Discharge Detection and Elimination folder on the Storm Water Management page: <https://una.edu/facilities/environmental-health-and-safety/index.html>.
- iv. All new and affected Facilities Department personnel (Maintenance and Grounds Departments) were trained on the identification, reporting, and corrective actions of illicit discharges. All existing employees were trained less than 5 years ago. Training was completed on: Oct. 25 and 28, Nov. 3, 6, and 7, Dec. 1, Jan. 13, and March 21.

The Storm Water Management Program training defines "illicit discharges" and informs the trainees of the negative consequences associated with illicit discharges and improper disposal of waste. The concerned person can either call Facilities Administration and Planning at 256-765-4804 or send an email by clicking on the link shown below on the Storm Water page on the UNA website (<https://una.edu/facilities/environmental-health-and-safety/report-a-storm-water-concern.html>).

- v. There were no investigated illicit discharges during this reporting cycle.

Assessment of the Control: This minimum control measure was determined to be effective. No BMP revisions are planned for this measurable goal.

c. Construction Site Storm Water Runoff Control

- i. The applicable regulatory mechanism is outlined in the Division of Construction Management guidelines (https://dcm.alabama.gov/PDF/forms/C-8_Gen_Cond.pdf). No revisions occurred or are planned.
- ii. Active construction sites and # of inspections during the reporting period

Project	Permit #/(Termination Date, if applicable)	# of construction site inspections	# of non-compliant construction site referrals/enforcement actions	# of construction site runoff complaints received	# of MS4 ² staff/inspectors trained
UNA Mathematics Building	ALR10C2JM	ADEM ¹ - 0 QCI - 41 UNA - 8	0		

¹ADEM – Alabama Department of Environmental Management

²Municipal Separate Storm Sewer System

One project manager had Qualified Credentialed Inspector (QCI) qualifications, QCI# T7161, exp. 12/3/2022. Contracted inspectors possess QCI qualifications.

Assessment of the Control: This minimum control measure was determined to be effective. Through the process of regular inspections and use of trained staff, UNA experienced no complaints or enforcement actions. No BMP revisions are planned for this measurable goal.

d. Post-Construction Storm Water Management in New Development and Redevelopment

- i. The applicable regulatory mechanism can be found outlined in the Division of Construction Management guidelines (https://dcm.alabama.gov/PDF/forms/C-8_Gen_Cond.pdf).
- ii. Post Construction Controls Inventory. There were no changes to the Inventory because no projects resulted in the installation of post-construction controls.
- iii. Post Construction Inspections. Two post-construction inspections of BMPs and controls were conducted at the following locations:
 - Subsurface detention chamber, Parking Lot M, Circular Rd. (1)
 - Detention Basin, Cedar St. (1)

Assessment of the Control: This minimum control measure was determined to be effective. No BMP revisions are planned for this measurable goal. There were no enforcement actions during this period.

e. Pollution Prevention/Good Housekeeping for Municipal Operations

- i. There were no updates to the Municipal Facility Inventory. The locations are listed in Table 1 below.

Table 1 - List of Municipal Facilities

1. 541 College St.	10. Cooling Tower - Behind Mane Market
2. Connie B. McKinney Center	11. Cooling Tower - Wesleyan Hall
3. Cooling Tower - Cramer Way	12. Fuel Pumps
4. Cooling Tower - Collier Library	13. Grounds Dept. Equipment Storage
5. Cooling Tower - ITS	14. Parking Deck and Lots
6. Cooling Tower - Flowers Hall	15. Science Building Mechanical Room
7. Cooling Tower - GUC	16. Steam Plant
8. Cooling Tower - Kilby School	17. Vehicle Maintenance
9. Cooling Tower - LaGrange Hall	

ii. Estimate of Floatables Collected/Litter Reduction

Grounds Department personnel are assigned to specific campus areas and one of their daily duties is to pick up litter. UNA also has a recycling program. Recycling containers are located in most campus buildings and are set up for large volume

Minimum Control Measure	Controls Planned/Scheduled
Construction Site Runoff Control	Through regular inspections and spot checks, continue to ensure that Best Management Practices follow the elements outlined in the Alabama Handbook for Erosion Control, Sediment Control and Storm water Management on Construction Sites and Urban Areas (https://www.dot.state.al.us/dsweb/divPed/Stormwater/pdf/AlabamaHandbookforErosionControl.pdf) and/or project-based CBMPP.
Post-Construction Management in New Development and Redevelopment	<ul style="list-style-type: none"> • Continue to develop and document the inventory of post-construction structural controls. • Ensure that a robust process exists for regular inspection and maintenance of post-construction structural controls as defined by the manufacturer, such as through a recurring preventive maintenance work order in the campus Work Order System, TMA.
Pollution Prevention/Good Housekeeping for Municipal Operations	<ul style="list-style-type: none"> • Through review and revision, ensure the municipal facility inventory and inspection processes accurately reflect campus activities, esp. after construction projects or renovations. • Ensure all new Municipal Operations personnel are trained on the Storm Water Management Program and Storm Water Standard Operating Procedures.

5. Results of information collected and analyzed, if any, during the reporting period.
 - i. Not applicable.

6. Notice of reliance on another entity to satisfy some of permit obligations.
 - ii. Not applicable

7. Results of the evaluation to determine whether discharges from any part of the MS4 contributes directly or indirectly to a waterbody included on the latest 303(d) list.
 - i. Although mercury in Cypress Creek is identified as a 303(d) pollutant on the Environmental Protection Agency's list of impaired waterways, it is atmospherically deposited by other regional sources. UNA is not a contributor. We will continue to monitor 303(d) lists (<http://adem.alabama.gov/programs/water/303d.cnt>) on a quarterly basis to determine if UNA is a possible source for other pollutants.

ATTACHMENT 1 UNIVERSITY OF NORTH ALABAMA MAP OF OUTFALLS







ADEM Annual Report 2022-2023 (1151102)

Final Audit Report

2023-05-10

Created:	2023-05-10
By:	Cindy Conlon (chconlon@ una.edu)
Status:	Signed
Transaction ID:	CBJCHBCAABAAeYjbMSOSccY4ggI8Q3s83sYMLAIFOhAd

"ADEM Annual Report 2022-2023 (1151102)" History

-  Document created by Cindy Conlon (chconlon@ una.edu)
2023-05-10 - 1:44:28 PM GMT - IP address: 204.29.102.110
-  Document emailed to VPBFA UNA (vpbfacontracts@ una.edu) for signature
2023-05-10 - 1:45:32 PM GMT
-  Email viewed by VPBFA UNA (vpbfacontracts@ una.edu)
2023-05-10 - 2:33:21 PM GMT - IP address: 204.29.102.15
-  Signer VPBFA UNA (vpbfacontracts@ una.edu) entered name at signing as Evan Matthew Thornton
2023-05-10 - 2:33:35 PM GMT - IP address: 204.29.102.15
-  Document e-signed by Evan Matthew Thornton (vpbfacontracts@ una.edu)
Signature Date: 2023-05-10 - 2:33:37 PM GMT - Time Source: server- IP address: 204.29.102.15
-  Agreement completed.
2023-05-10 - 2:33:37 PM GMT